



Tunnel A26 Linzer Autobahn (AT) Cavity Grouting

Country	Austria
Type	Motorway Tunnel
Client	Asfinag (Austrian's highway financing stock corporation)
Main Contractor	ICM construction GmbH
Execution of the work	Renesco GmbH
Designer/ Engineering	ILF, KMP, Retter, ste.p, Pöyry
Construction Period	2024

Project Description

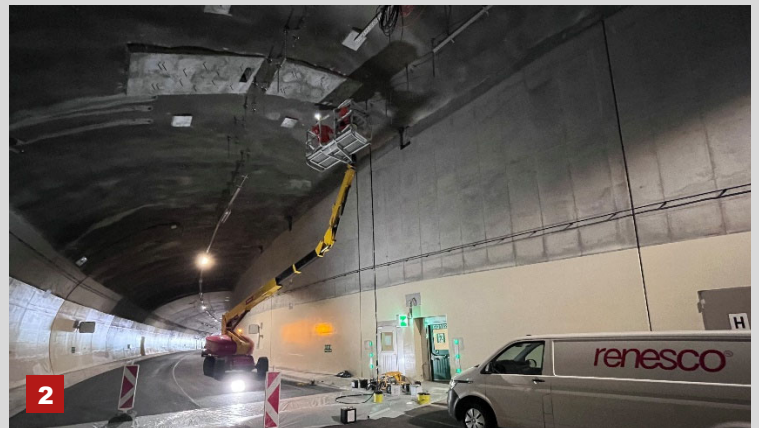
The A26 Linzer Autobahn represents one of the most complex new construction projects in the urban area of Linz. The A26 extends from the A7 - node of Hummelhof to the Danube break-through where - on both sides of the Danube River via interchanges - it connects to the B129 Eferdinger Strasse and the B127 Rohrbacher Strasse. The entire segment of the A26 has a length of 4.7km. Due to its location in the city, it is dominated by an arrangement of engineered structures. All in all, two bridge structures, underground tunnels, and a cut-and-cover tunnel are to be built. Project "Phase 1" consists in two lots: one for the construction of a 385-meter 4-lane cable-stayed bridge on the Danube River and one for the construction of north-bound and south-bound junction tunnels for a total length of 3.3km approximately. Other connected works include the construction of a tunnel operation center, electrical niches, cross passages, and other supporting buildings necessary for the supervision of the infrastructure, rock stabilization and implementation of safety measures.

The excavation is carried out cyclically using the NATM method. A special feature are the cross-sections of the branching areas, which have a very large span with excavated areas at the widest points in the south of approx. 300m² and in the north approx. 370m². Two-, three- and four-lane cross-sections are being executed, with a maximum lane width of 14.50m.

Scope of Service

Cavity grouting behind the shotcrete inner liner in the area of the ventilation fixations (crown).

- Two component resin on silicate basis with a foaming factor of 1
- Packer Ø 18mm
- Two component injection pump/ air power
- Raster injection
- Injection pressure 1 bar, continuously
- Quality documentation



1. Crown area, packer
2. Injection works inside the tunnel
3. Project overview